

TP-LINK®

User Guide

TL-PA201

200Mbps Powerline Ethernet Adapter



Rev: 2.0.1
1910010323

COPYRIGHT & TRADEMARKS

Specifications are subject to change without notice. **TP-LINK®** is a registered trademark of TP-LINK TECHNOLOGIES CO., LTD. Other brands and product names are trademarks or registered trademarks of their respective holders.

No part of the specifications may be reproduced in any form or by any means or used to make any derivative such as translation, transformation, or adaptation without permission from TP-LINK TECHNOLOGIES CO., LTD. Copyright © 2010 TP-LINK TECHNOLOGIES CO., LTD. All rights reserved.

<http://www.tp-link.com>

FCC STATEMENT



This equipment has been tested and found to comply with the limits for a Class B digital device, pursuant to part 15 of the FCC Rules. These limits are designed to provide reasonable protection against harmful interference in a residential installation. This equipment generates, uses and can radiate radio frequency energy and, if not installed and used in accordance with the instructions, may cause harmful interference to radio communications. However, there is no guarantee that interference will not occur in a particular installation. If this equipment does cause harmful interference to radio or television reception, which can be determined by turning the equipment off and on, the user is encouraged to try to correct the interference by one or more of the following measures:

- Reorient or relocate the receiving antenna.
- Increase the separation between the equipment and receiver.
- Connect the equipment into an outlet on a circuit different from that to which the receiver is connected.
- Consult the dealer or an experienced radio/ TV technician for help.

This device complies with part 15 of the FCC Rules. Operation is subject to the following two conditions:

- 1) This device may not cause harmful interference.
- 2) This device must accept any interference received, including interference that may cause undesired operation.

Any changes or modifications not expressly approved by the party responsible for compliance could void the user's authority to operate the equipment.

CE Mark Warning



This is a class B product. In a domestic environment, this product may cause radio interference, in which case the user may be required to take adequate measures.

Important Safety Instructions

1. Do Not open this product or attempt to service this product, it may expose you to dangerous high voltage and other risks.
2. Do Not operate this product near water.
3. Do Not place or operate near or over radiator or heat register.
4. Do Not expose this product to dampness, dust or corrosive liquids.
5. Do Not connect this product and Disconnect from wall socket during a lightning or thunderstorm
6. Do Not obstruct this product ventilation slots, as insufficient airflow may harm this product.
7. Do Not put anything on this product.
8. Plug directly into wall socket (100Vac~240Vac). Do Not use an extension cord between this product and the AC power source.
9. When plugging this product into wall socket, make sure that electrical socket are not damaged, and no leakage for gas or water pipes to begin with.
10. Place the connecting cables carefully so people won't stumble or walk on it.
11. The Powerline Adapter should be operated from the type of power indicated on the marking label. If you are not sure of the type of power available, consult the qualified technician.
12. Unplug the Powerline Adapter from the mains and refer the product to qualified service personnel for the following conditions:
 - If liquid has been spilled on the product
 - If the product has been exposed to rain or water
13. Unplug from the wall socket before cleaning. Use a damp cloth for cleaning. Do not use liquid cleaners or aerosol cleaners.
14. The specification of the fuse is **T2.5AL250V**. To avoid damage, please do not change the fuse.

CONTENTS

Chapter 1 Introduction.....	1
Chapter 2 Connecting Mechanism	2
2.1 Introduction	2
2.2 LED Indicator	2
2.3 Physical Interface.....	3
2.4 Hardware Connection – Computer.....	4
2.5 Hardware Connection – Internet.....	4
Chapter 3 Installing Management Utility	6
3.1 For Windows XP	6
3.2 For Windows Vista	9
3.3 For Windows 7	11
Chapter 4 Using The Management Utility	15
4.1 Main	15
4.1.1 Rename.....	17
4.1.2 Enter Password.....	18
4.1.3 Add Device.....	19
4.2 Privacy	20
4.3 QoS	21
4.4 Diagnostics.....	21
4.5 About.....	23
Chapter 5 Advance Feature: How to Use the Push buttons	24
5.1 Pair(Secure with 128 bits-AES)	24
5.2 Set Up a Powerline AV Network with the Pair button	24
5.3 Reset.....	25
Chapter 6 Appendix A: Troubleshooting Guide.....	26

Chapter 1 Introduction

Congratulations on your purchase of this outstanding Powerline Ethernet Adapter. This device is an 200Mbps Powerline Ethernet Adapter which transforms your house's existing electrical wiring into an ubiquitous networking infrastructure. Simply plug this 200Mbps Powerline Ethernet Adapter into an ordinary AC power outlet which will easily extend your Cable/xDSL broadband connection or existing Ethernet (LAN) network to any other electrical outlet in any room of a house without the need of any new cabling.

This Powerline Ethernet Adapter supports up to 200Mbps data rate over the existing household power circuit. With data rates of 200Mbps, full multimedia application can easily be supported throughout the whole house in addition to Internet access. This Powerline Ethernet Adapter uses the existing power lines installed in a home as a path to transmit digital data, voice, audio and video between devices.

To ensure data communication's security and multimedia applications, this Powerline Ethernet Adapter support built-in 128-bit AES encryption and Quality of Service (QoS) features. With minimum setup, you can install and use this Powerline Ethernet Adapter within minutes. The adapter add two new function to be useful.

1. Existing connection with a new unassociated device added via the **Pair** button.
2. Reset to default setting via the **Reset** button.

A. System Requirement

- a) At least two AC 100V ~ 240V power outlets with standard home power wiring
- b) A computer with the following:
 - Operating System of Windows XP, Windows Vista or Windows 7
 - Operating System with TCP/IP installed
 - Pentium III compatible processor and above
 - Ethernet LAN card installed with TCP/IP protocol
 - 64 MB RAM or more
 - 50 MB of free disk space (Minimum)
 - CD-ROM Drive

B. Package Contents

The 200Mbps Powerline Ethernet Adapter package contains the following items:

- One 200Mbps Powerline Ethernet Adapter (There are two 200Mbps Powerline Ethernet Adapters in Starter Kit)
- One CAT-5 Ethernet Cable (There are two CAT-5 Ethernet Cables in Starter Kit)
- One Quick Installation Guide
- One CD-ROM (Utility / Manual / Quick Installation Guide/Acrobat Reader)

If any of the above items are damaged or missing, please contact your dealer immediately.

Chapter 2 Connecting Mechanism

2.1 Introduction

The Powerline Ethernet Adapter support up to 200Mbps data rate. With this high speed connection rate, this Powerline Ethernet Adapter allows you to setup a high speed home network by using your home existing electrical wiring. Simply plug this Powerline Ethernet Adapter into an ordinary power outlet to extend your Cable/xDSL broadband connection or existing LAN network to any other electrical outlet in any rooms of your house.

Take notes that this Powerline Ethernet Adapter works in pairs. You need to plug one Powerline Ethernet Adapter into a power outlet for each computer (Connect to the computer LAN card) you want to connect (Network access); you will also need another Powerline Ethernet Adapter connected to your Cable/xDSL broadband (Ethernet port) in order to extend your broadband connection or Internet surfing. With clean powerline, the distance between two Powerline Ethernet Adapters can reach 300 meters at lease, but the actual distance may vary due to the environment.

Section below describes the Powerline Ethernet Adapter's LED indicators, physical interface and hardware connection mechanism.

2.2 LED Indicator

The LED indicator displays information about the device's status.



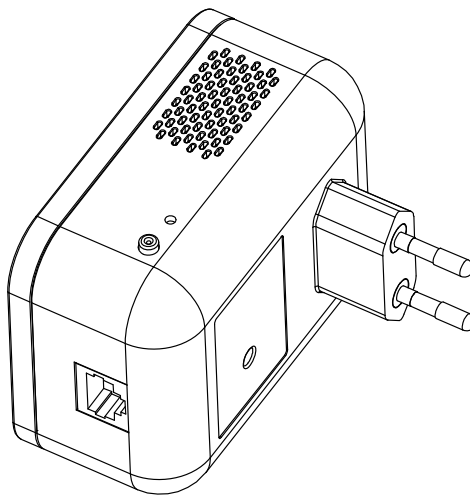
Name	Status	Indication
PWR	Off	Power is off
	On	Power is on
	Flashing	The Homeplug is in power-saving Mode
PLC	Off	The Homeplug has not connected to Homeplug AV network or is in power-saving Mode
	On	The Homeplug has connected to Homeplug AV network successfully
	Flashing	The Homeplug is transmitting data over Homeplug AV network
ETH	Off	The Ethernet port is not connected to a device or the device is power off
	On	A solid light indicates a connection on the Ethernet port
	Flashing	Data is being transmitted through the Ethernet port

 **Note:**

- When PLC is flashing, different colours represent different data transmitting performance.
 Green LED: Power Line speed > 80 Mbps
 Amber LED: Power Line speed < 80 Mbps and > 30 Mbps
 Red LED: Power Line speed < 30 Mbps
- 5 minutes later since the device connected to the Homeplug is powered off, the Homeplug will switch to Power-saving Mode automatically.

2.3 Physical Interface

There are four physical interfaces on this Powerline Ethernet Adapter.



Interface	Description
Ethernet	One 10/100Mbps Ethernet port connected to PC LAN card or broadband device
Power Plug	Power Plug connected to any 100V ~ 240V AC power socket
Reset	Use a pin to press and hold this Reset button for 3 to 10 seconds then the device will restore to factory defaults
Pair	Press and hold the Pair button for about 3 to 8 seconds, then release it. The Power LED will begin flashing. Perform the same step to the Rest of the Homeplug devices in 2 minutes

 **Note:**

- If you press the Pair button for more than 10 seconds, The PLC will leave the network it is associated with and its network name assumes a random value. The Power LED turns off when it disconnects from the Powerline network.
- For detail information about the Reset button and Pair button, please refer to [Chapter 5 Advanced Feature: How to Use the Push buttons](#)

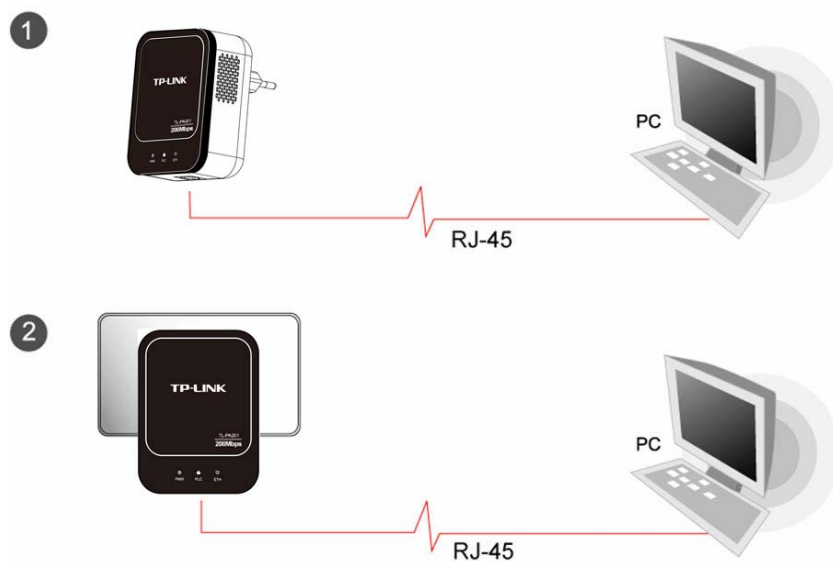
2.4 Hardware Connection – Computer

For those computers you wish to be networked by Powerline Ethernet Adapter, each of the computers must be properly connected with an Powerline Ethernet Adapter through an Ethernet (RJ-45) cable.

Following are the steps to properly connect the Powerline Ethernet Adapter to your computer:

1. Connect the provided Ethernet (RJ-45) cable to the Powerline Ethernet Adapter's Ethernet port.
2. Connect the other end of the Ethernet (RJ-45) cable to you computer's LAN port.
3. Plug the Powerline Ethernet Adapter into a wall socket next to the computer.
4. Turn on your computer.
5. Check and confirm that the **PWR** and **ETH** LEDs on the Powerline Ethernet Adapter are **ON**.

The hardware connection mechanism is shown below:

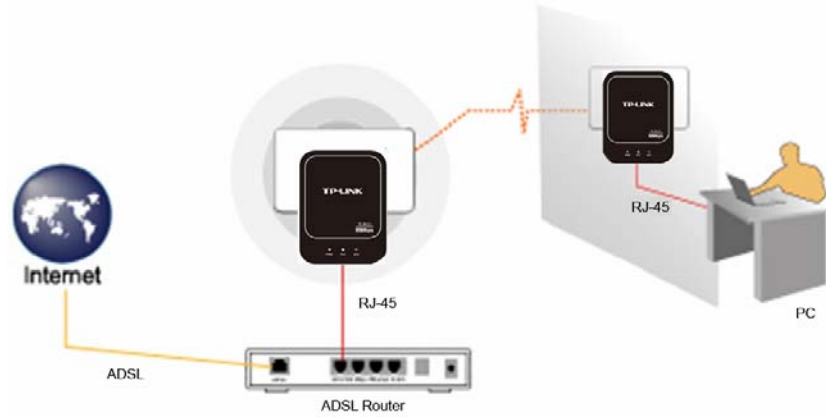


2.5 Hardware Connection – Internet

This section describes how to connect the Powerline Ethernet Adapter into your existing ADSL broadband connection via ADSL Ethernet port. Follow the procedures describe below to connect the Powerline Ethernet Adapter to your ADSL broadband connection:

1. Connect the provided Ethernet (RJ-45) cable to the Powerline Ethernet Adapter's Ethernet port.
2. Connect the other end of the Ethernet (RJ-45) cable to an available Ethernet port of your ADSL broadband Router.
3. Plug the Powerline Ethernet Adapter into a wall socket next to the computer.
4. Turn on your computer.
5. Check and confirm that the **PWR**, **PLC** and **ETH** LEDs on the Powerline Ethernet Adapter are **ON**.

The hardware connection mechanism is shown below:



 **Note:**

Do not connect the Powerline adapter to an extension lead, power strip, extension cord, surge protector as this may degrade the network performance.

Chapter 3 Installing Management Utility

Please verify that no other Powerline Ethernet Adapter or any Encryption Management Utilities are installed before installing the provided software. If other Powerline Utilities are installed, uninstall them and restart your personal computer before installing this provided software. The Management utility can be used on Operating System of Windows XP, Windows Vista or Windows 7.

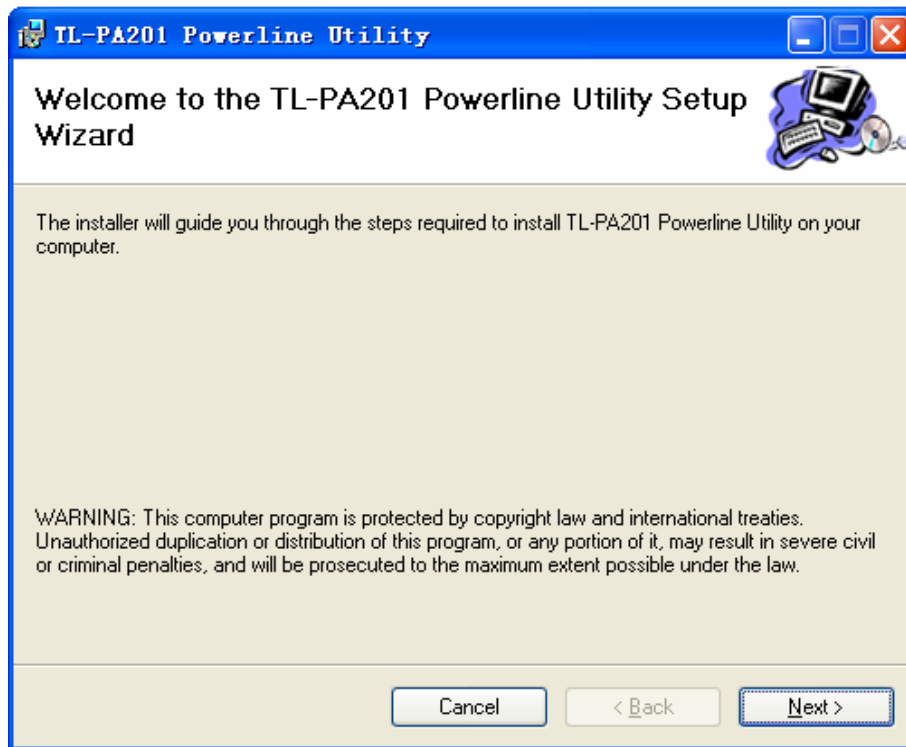
 **Note:**

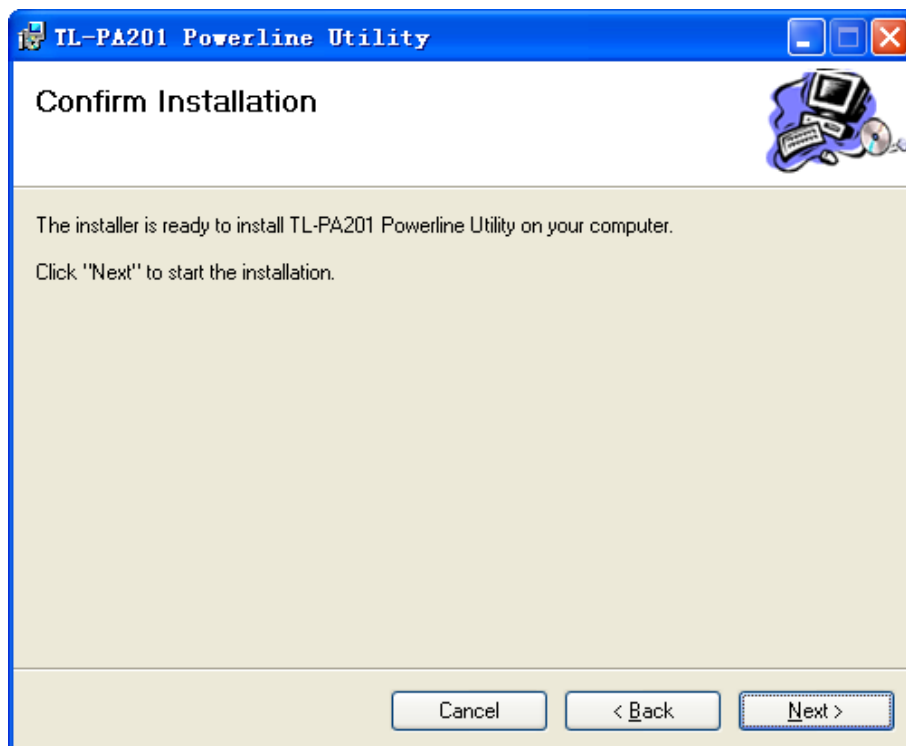
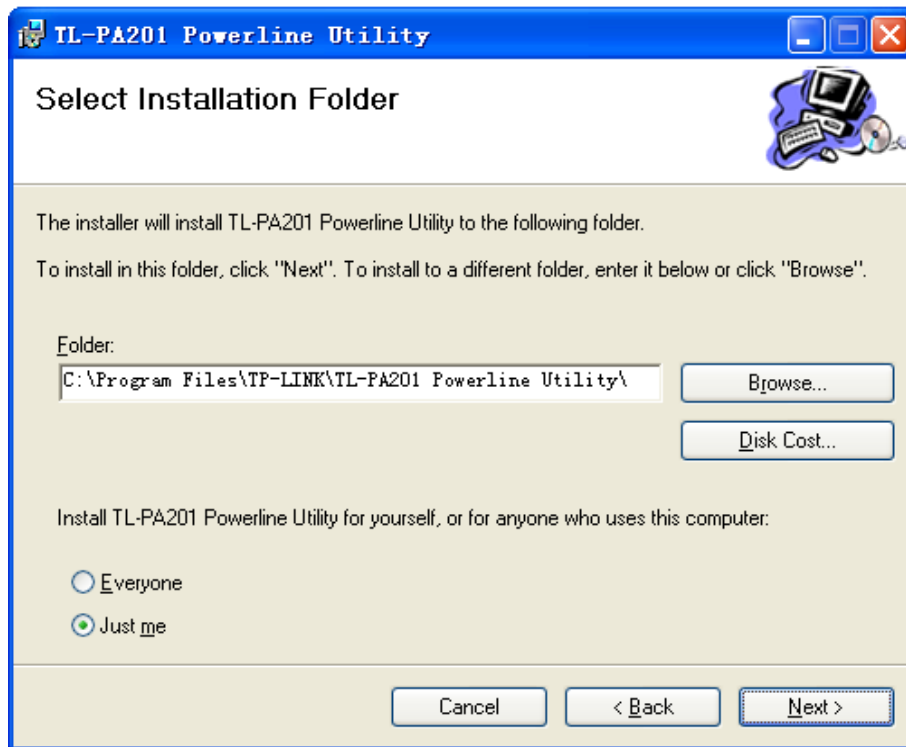
Please make sure that you have installed the **WinPcap** (the version of which should be beyond 4.1.1 inclusive) on your computer before installing the Management Utility. The **WinPcap** can be found on the provided resource CD.

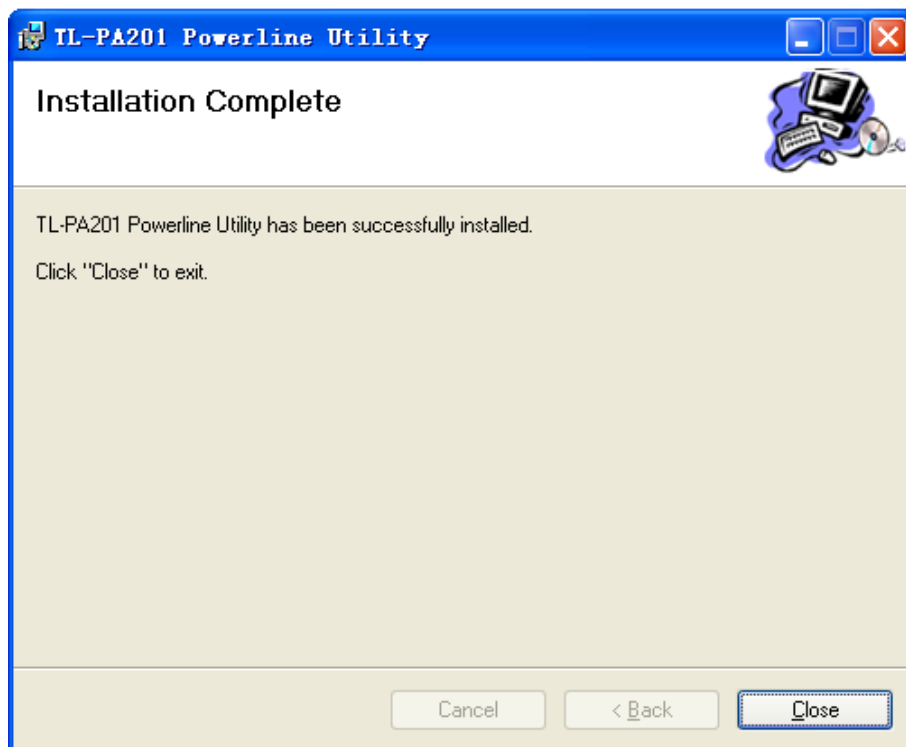
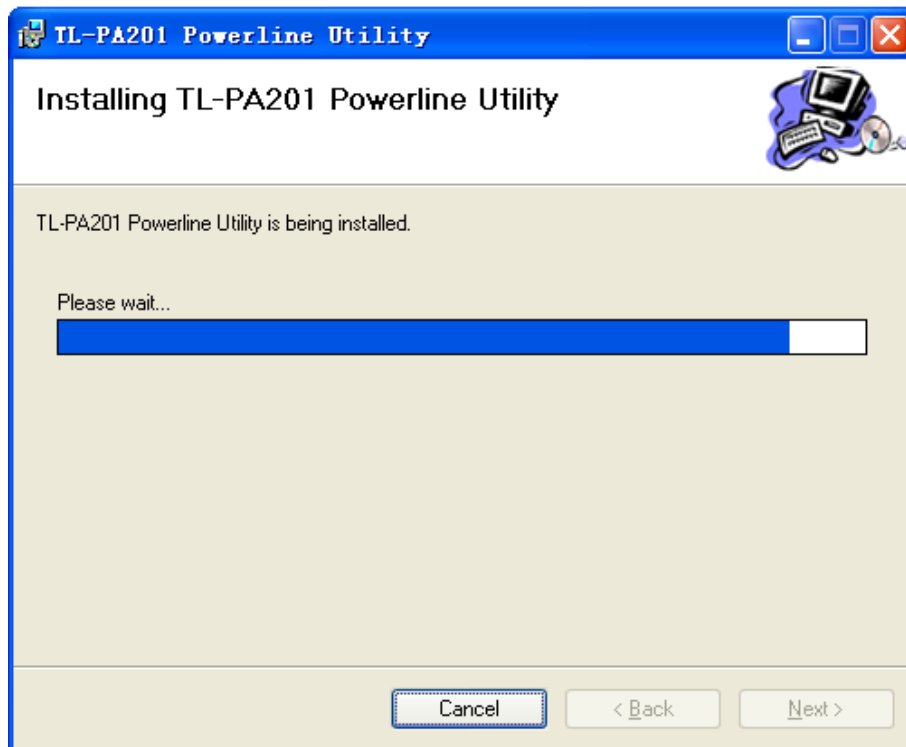
3.1 For Windows XP

Take the following procedures to properly installing the provided Management Utility:

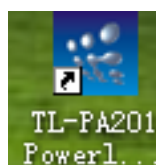
Step 1: The program installation process will carry out and copy all the necessary files to your system.







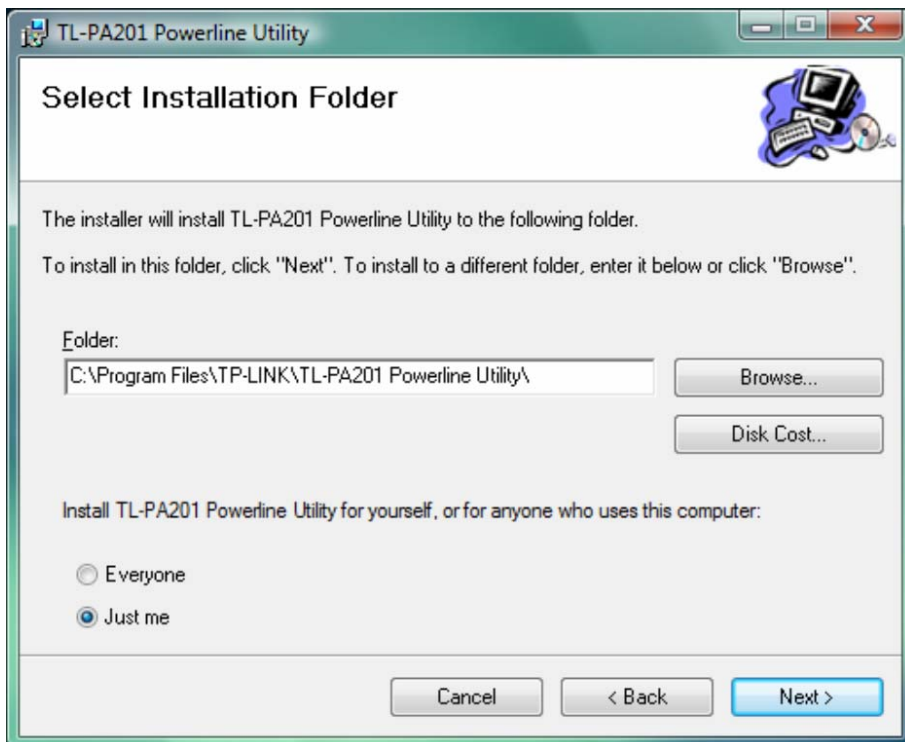
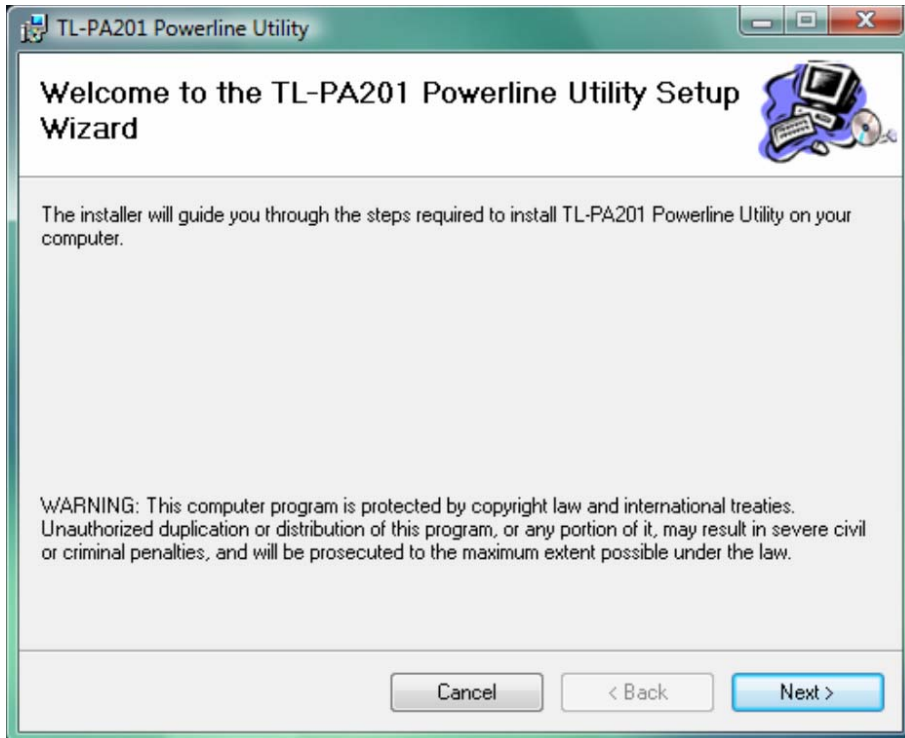
Step 2: After the installation, a shortcut to the “**TL-PA201 Powerline Utility**” application icon is provided on the windows desktop.

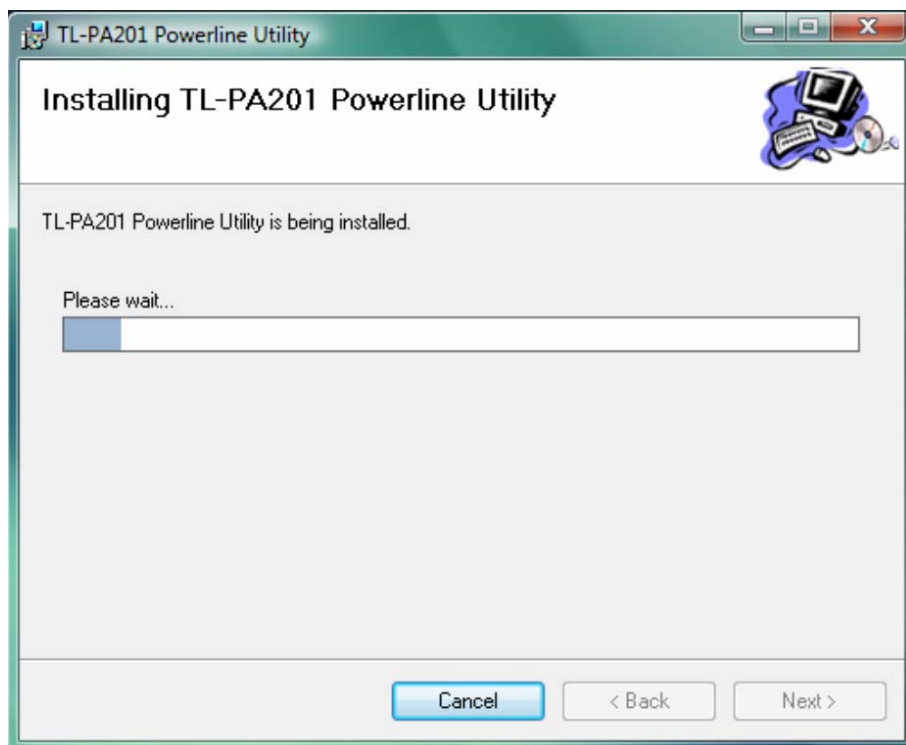
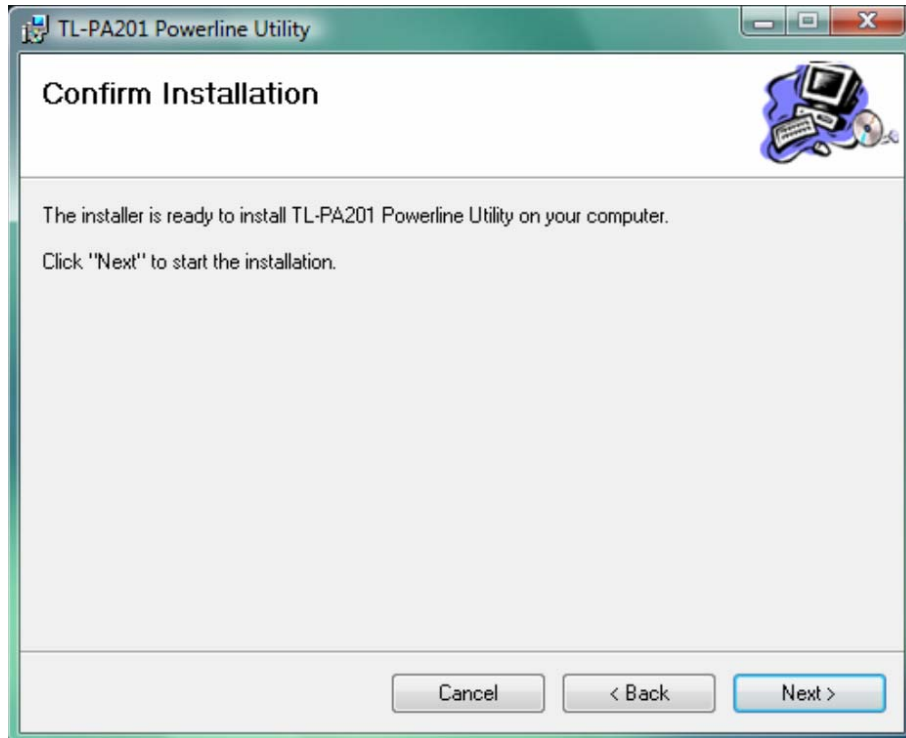


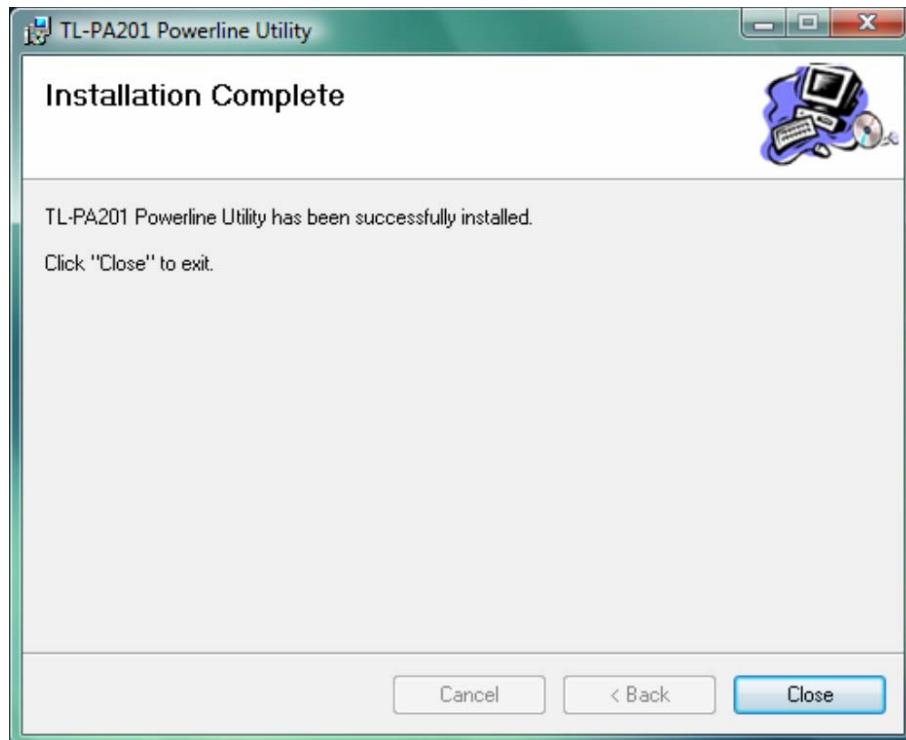
3.2 For Windows Vista

Take the following procedures to properly installing the provided Management Utility:

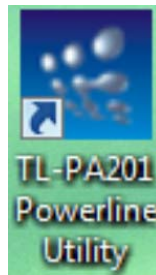
Step 1: The program installation process will carry out and copy all the necessary files to your system.







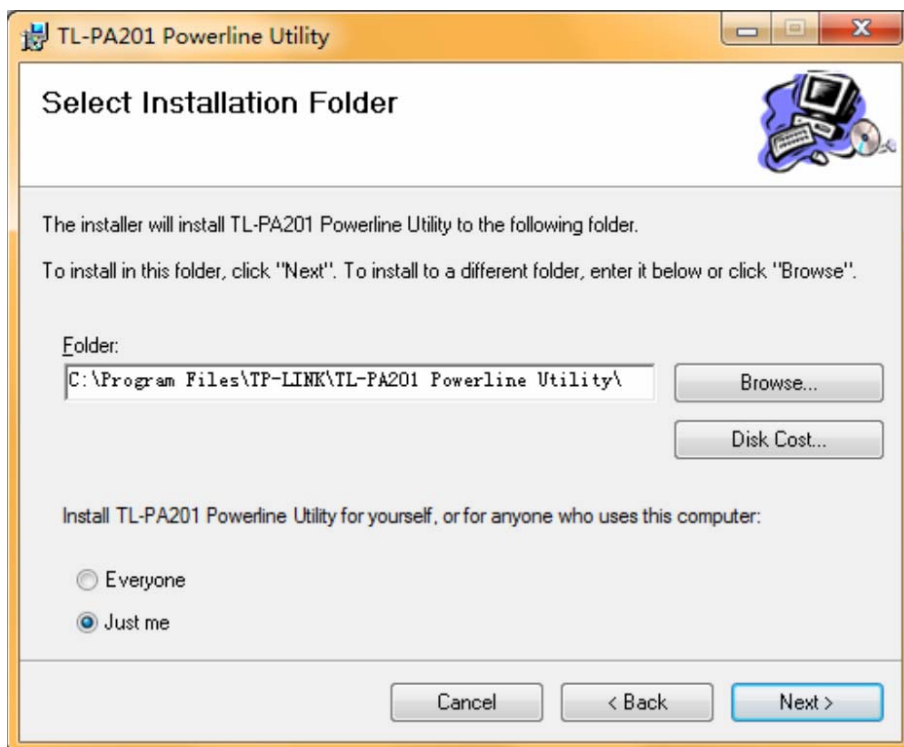
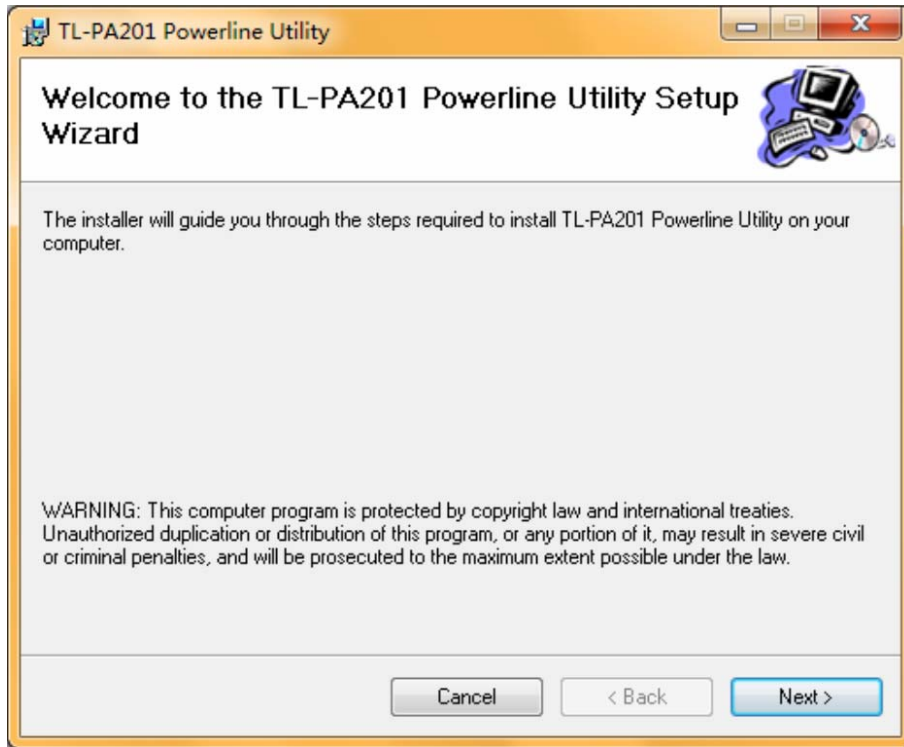
Step 2: After the installation, a shortcut to the “**TL-PA201 Powerline Utility**” application icon is provided on the windows desktop.

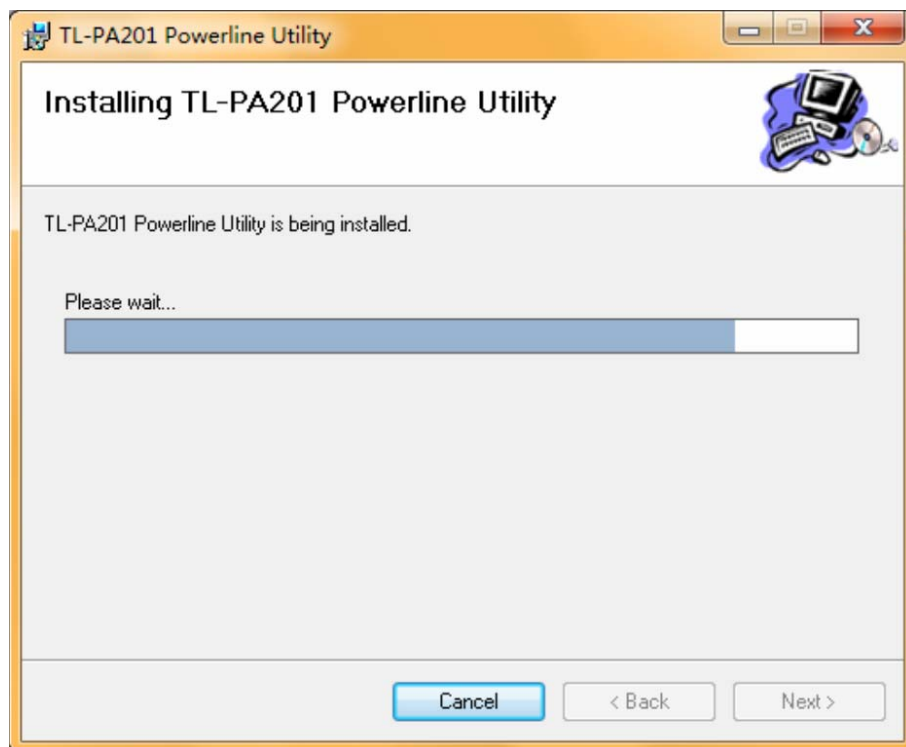
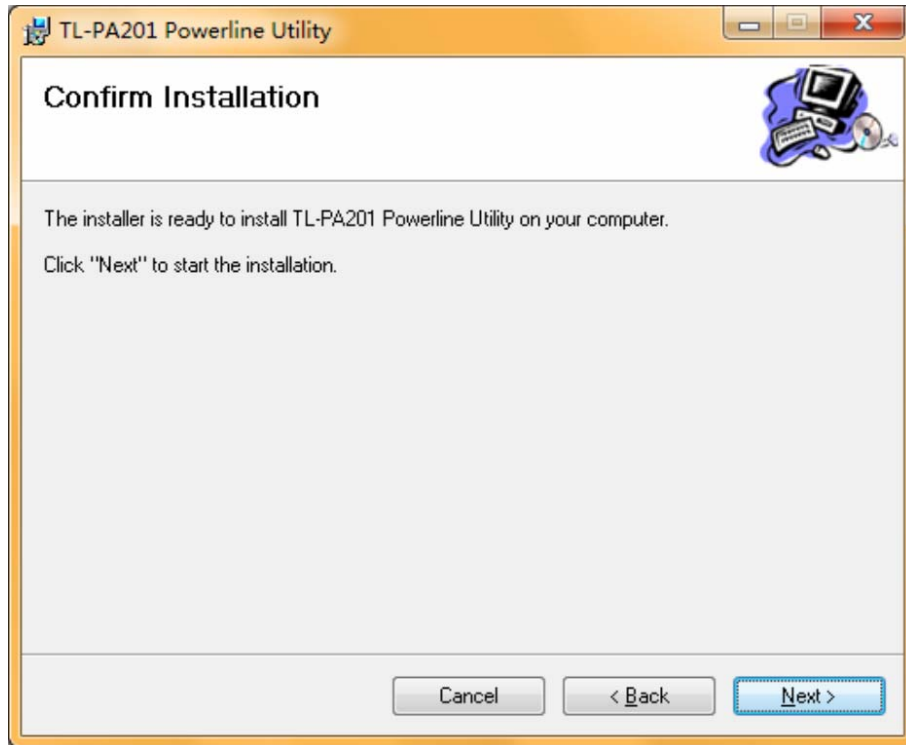


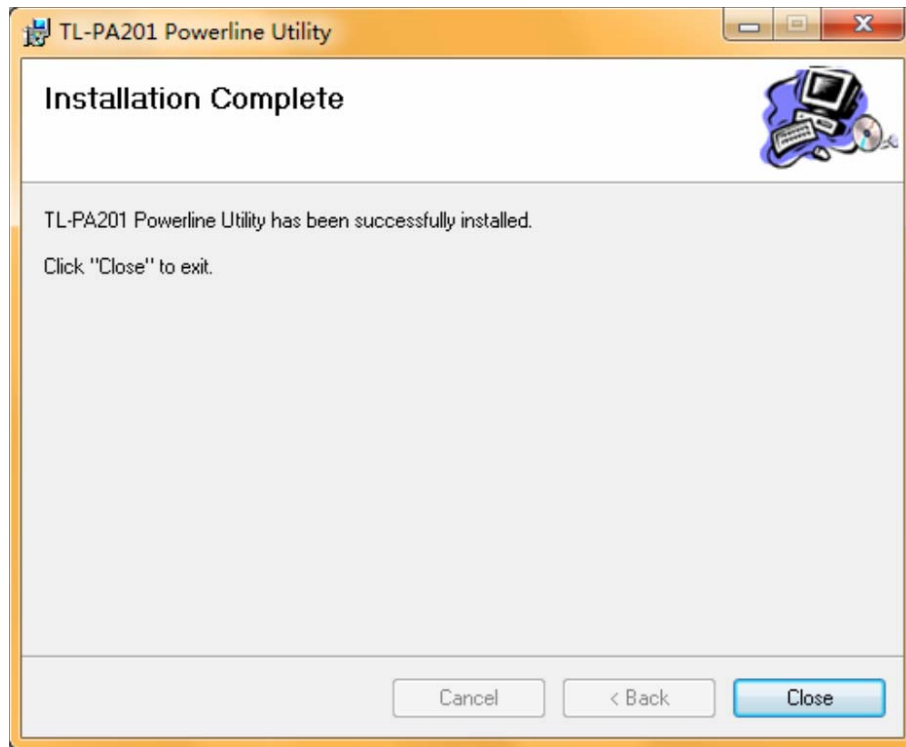
3.3 For Windows 7

Take the following procedures to properly installing the provided Management Utility:

Step 1: The program installation process will carry out and copy all the necessary files to your system.







Step 2: After the installation, a shortcut to the “**TL-PA201 Powerline Utility**” application icon is provided on the windows desktop.



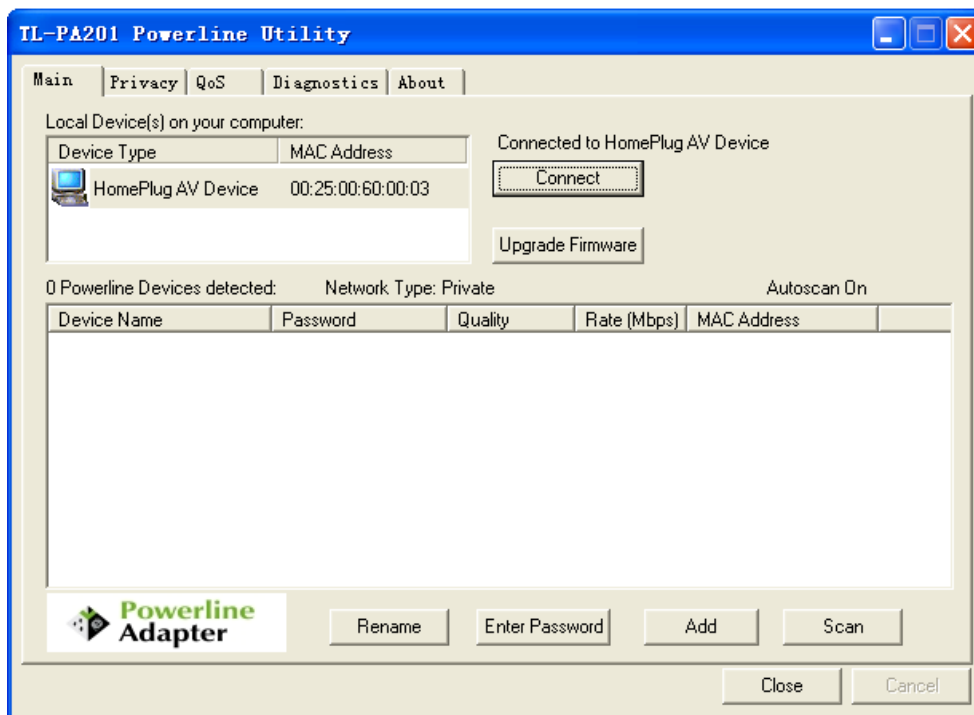
Chapter 4 Using The Management Utility

After you'd successfully installed the Powerline Ethernet Adapter hardware and Management Utility software, you can setup or configure the devices according to your need.

This Powerline Ethernet Adapter Configuration Utility enables the users to identify powerline devices on the powerline network, measures data rate performance, ensures privacy and performs diagnostics by setting user defined secure powerline networks.

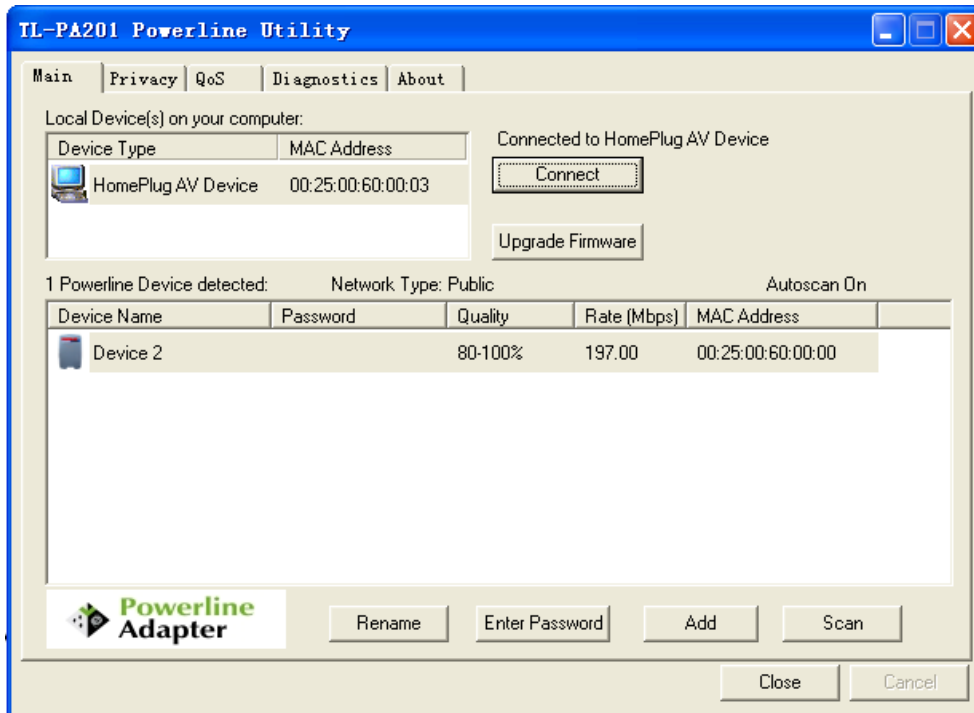
Here, we take the operation system Windows XP for example, as the configuration for the other two systems is similar.

Double click on the “TL-PA201 Powerline Utility” from your windows desktop, the following screen display. This Management Utility consists of a set of five property sheets, viz., “Main”, “Privacy”, “QoS”, “Diagnostics” and “About”.

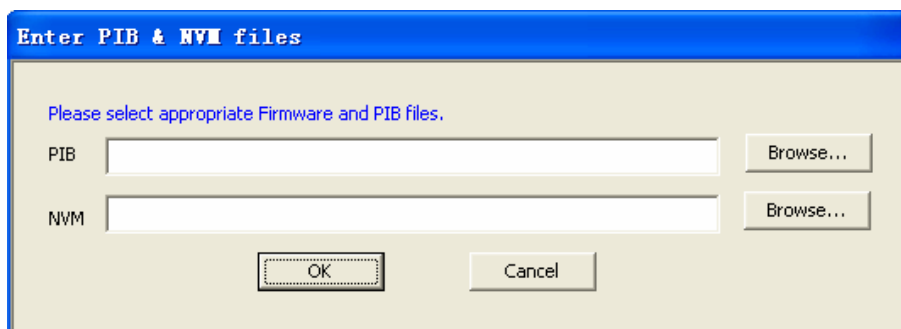


4.1 Main

The **Main** tab shows all the Powerline Ethernet Adapter that are logically connected to the current computer where the Management Utility is running.



- **Local Device(s) on your computer:** This shows all local Powerline Ethernet Adapter found connected to the computer’s LAN card. In most cases, only one device will display in this panel. Click and select the local device shown on the screen then click “**Connect**” tab to manage the Powerline Ethernet Adapter. The status message will be shown above the “**Connect**” button indicates that your PC is connected to the same device. Once the chosen Powerline Ethernet Adapter is properly connected, this Management Utility will automatically scan the power line periodically for any other existing powerline devices. You can upgrade the version of firmware for the device by clicking the **Upgrade Firmware** button which is shown as below.



- **PIB:** Parameter Information Block. It contains configuration values that establish device network identity, general capabilities and operational modes.
- **NVM:** None-volatile memory. It is used for upgrading the firmware.

If you want to upgrade the version of firmware for the device, please select appropriate Firmware and PIB files together. New firmware versions and PIB files are posted at www.tp-link.com and can be downloaded for free.

 **Note:**

The parameter information of PIB will restore to the factory defaults after resetting the PLC.

To upgrade the device's firmware, follow these instructions:

1. Download PIB file and firmware upgrade file from the TP-LINK website (www.tp-link.com).
2. Enter the path name or click **Browse...** to select the downloaded files on the computer into the corresponding blanks.
3. Click the **OK** button.

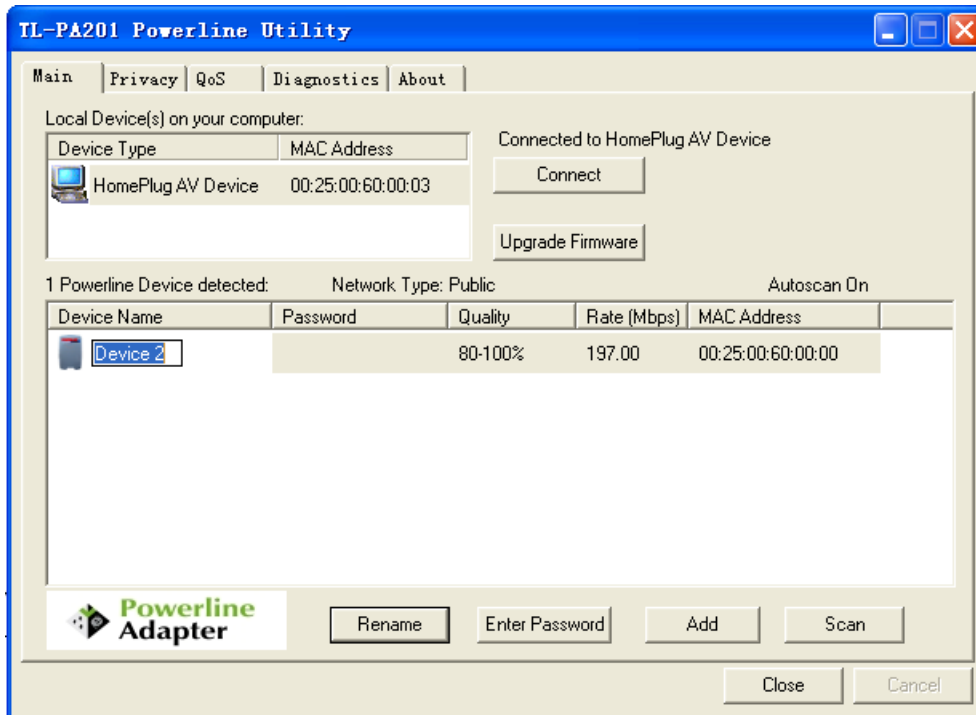
 **Note:**

Do not turn off the device or press the Reset button while the firmware is being upgraded. The device will reboot after the Upgrading has been finished.

- **“x” Powerline Devices detected:** This display all the Powerline Ethernet Adapter found on the current logical network. “x” shows the number of remote Powerline Ethernet Adapter discovered by this Management Utility.
- **Network Type:** Displayed the type of logical network: “**Public**” or “**Private**”.
- **Autoscan:** Shows the scanning status (Default is “**ON**”).
 - **Device Name:** Shows the default device name. One may redefine or change the name by clicking on the name and editing in place or by clicking the “**Rename**” button.
 - **Password:** Shows the current password of the Powerline Ethernet Adapter.
 - **Quality:** Shows the quality of the Powerline Ethernet Adapter connection.
 - **Rate (Mbps):** Shows the current transmission rate of the selected Powerline Ethernet Adapter.
 - **MAC Address:** Shows the Powerline Ethernet Adapter’s MAC address.
- **Rename:** Click to change the name of the selected Powerline Ethernet Adapter.
- **Enter Password:** Shows the supplied Powerline Ethernet Adapter’s password (Initially left blank). To set the Powerline Ethernet Adapter password (Which is required when creating a private network), click and select the device shown in the lower panel and click on the “**Enter Password**” button. Follow the pop-up dialog box to complete your password setting.
- **Add:** Click this button to add a remote Powerline Ethernet Adapter to your network that is not on the lower panel displayed list. You will advice to locate the passwords for all Powerline Ethernet Adapter you wish to manage and add them to the local logical network by clicking the “**Add**” button. Follow the pop-up dialog box to complete your setting.
- **Scan:** Click the “**Scan**” button to perform an immediate search of the Powerline Ethernet Adapter connected to the computer. The Management Utility will automatically perform the scanning process and update the display every few seconds by default.

4.1.1 Rename

This Management Utility allows you to change the name of the listed Powerline Ethernet Adapter. Click and select the Powerline Ethernet Adapter you wish to change from the list, then click on the “**Rename**” tab and editing-in-place to change the name.



4.1.2 Enter Password

To set or change your Powerline Ethernet Adapter’s password, click and select the Powerline Ethernet Adapter you wish to change from the list, then click on the “**Enter Password**” tab, the following screen display.

Enter your **Password** (Take note to the password format) and click “**OK**” after setup.



 **Note:**

The Powerline Ethernet Adapter device must be present on the power line (plugged in) in order for the password to be confirmed and added to the network. If the Powerline Ethernet Adapter device could not be located, a warning message will be shown.

4.1.3 Add Device

The following dialog box pop-up when clicking the “Add” button under **Main** configuration homepage. The dialog box allows you to enter both the selected device’s name and password. Noted that the Powerline Ethernet Adapter must be present on the power grid in order to activate the set password and added to the local network.

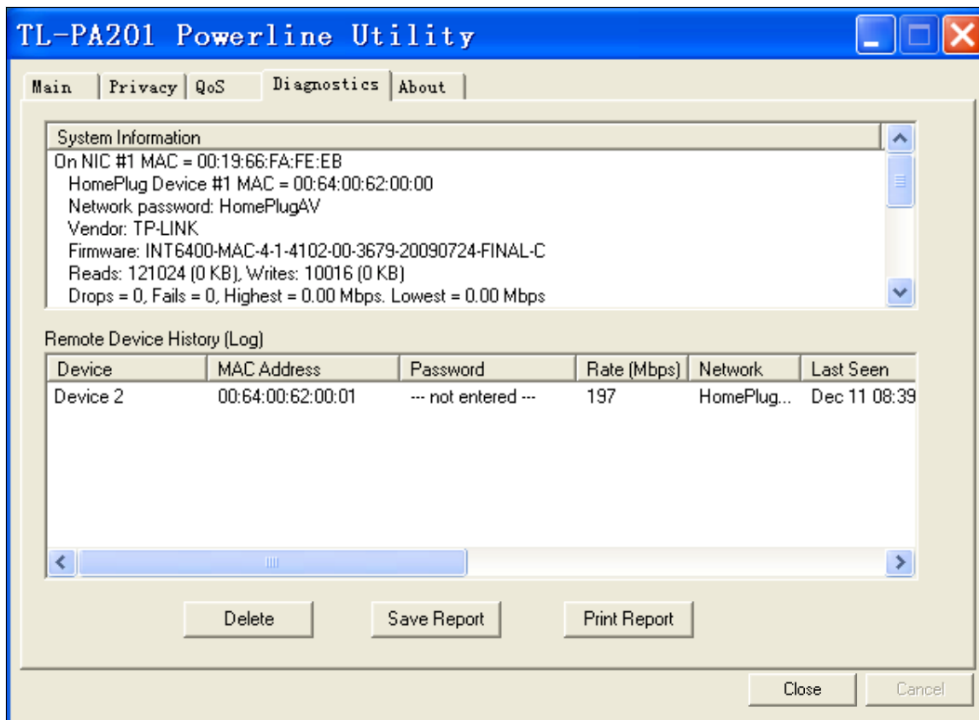
Enter your **Device Name** and **Password** (Take note to the password format) and click “OK” after setup.



Note:

After clicking “OK”, please wait for about 70 seconds to complete this operation.

The following screen display after the naming and password setting process, which is also the **Diagnostics** configuration homepage.



4.2 Privacy

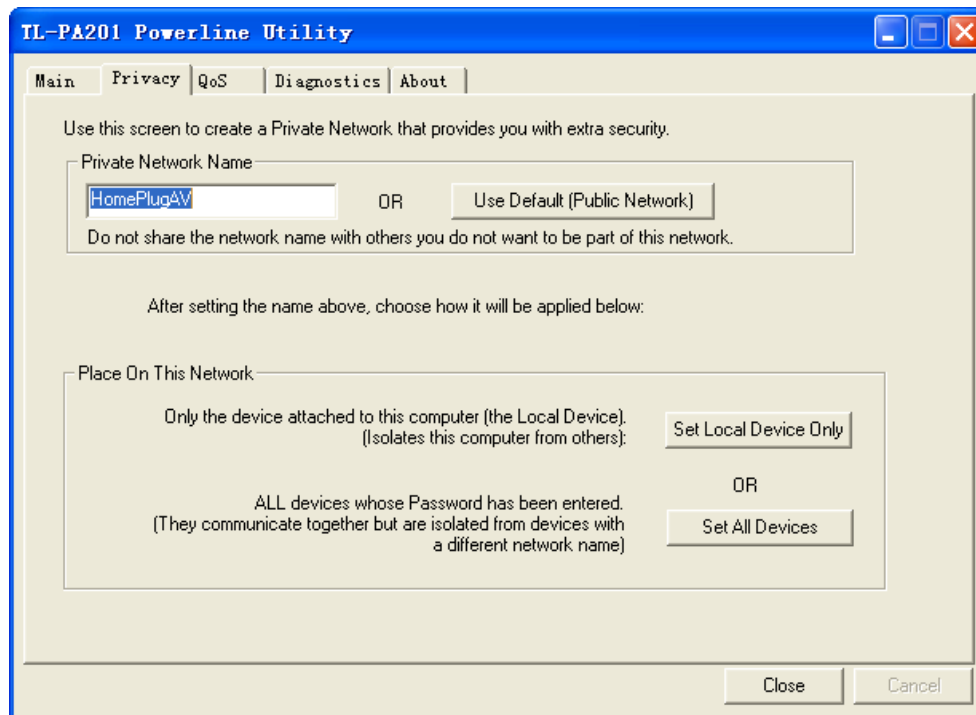
The **Privacy** configuration page provides a means for managing the local network and providing additional security for the logical network and also to select the devices that has to be included in the network. All Powerline devices are shipped using a default logical network (network name), which is normally “**HomePlugAV**”

The **Privacy** configuration homepage allows you to change the **Network Name** of the Powerline Ethernet Adapter that is currently connected to this computer into a private network. Reset the private network to universal public network by clicking on the “**Use Default (Public Network)**” or entering/editing “**HomePlugAV**” under column of “**Private Network Name**” is always available.

Note that every Powerline Ethernet Adapter on your home network **MUST** have the same **Network Password** for connectivity to be established throughout your home.

 **Note:**

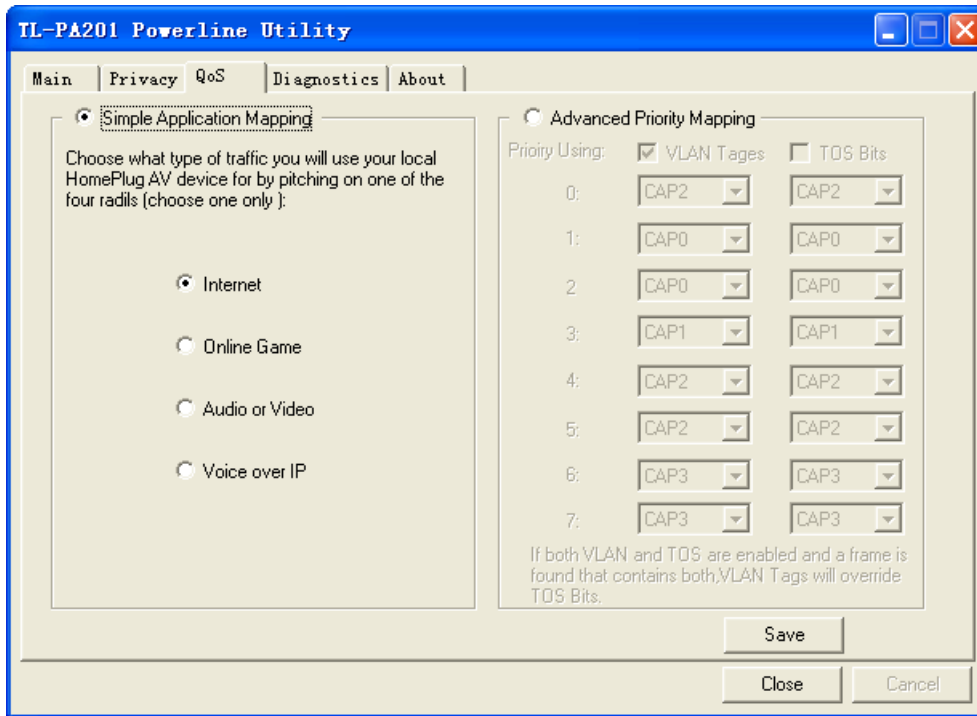
Changing the network name to anything other than “**HomePlugAV**” will show the network type on the Main configuration screen as “**Private**”.



- **Set Local Device Only:** Click this tab to change the network name of the local Powerline Ethernet Adapter device only. All Powerline Ethernet Adapter devices seen on the **Main** configuration homepage prior to this will be no longer present in the new network, effectively making the local devices not to communicate to the devices which were in the old logical network. Devices previously set up with the same logical network (same network name) will appear in the device list afterward selecting this option.
- **Set All Devices:** The **Set All Devices** button is used to change the logical network of all devices that appear on the **Main** configuration homepage whose Device’s Password had been entered for the same logical network. A dialog window will appear to report the success of this operation. For devices whose device passwords were not entered, this operation will fail and will report a failure message.

4.3 QoS

The third tabbed window, labeled 'QoS' for Quality of Service, is shown in Figure.



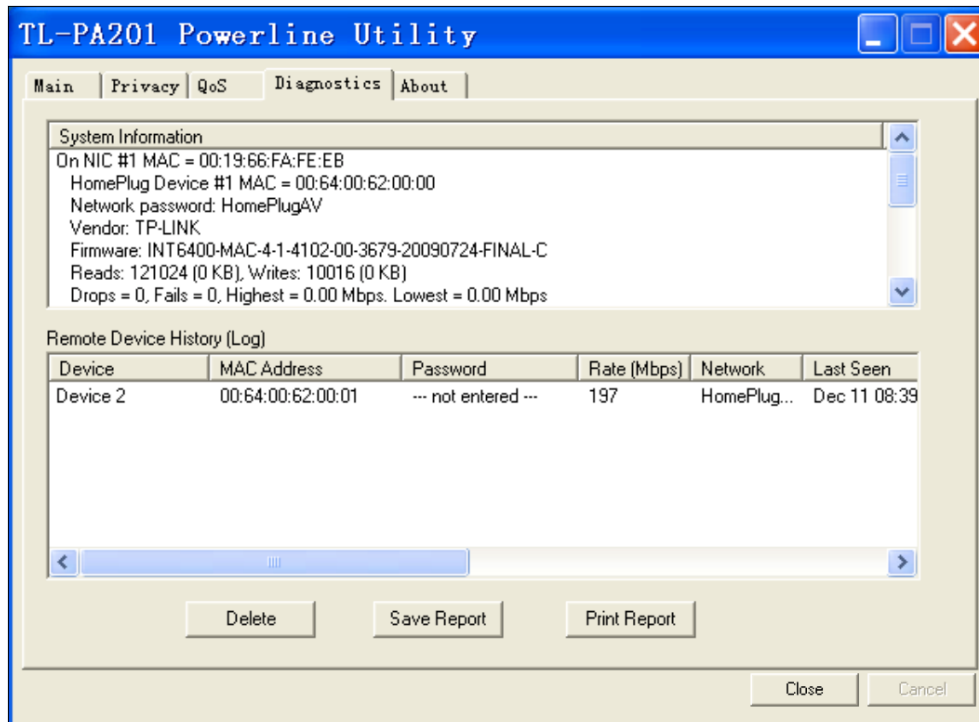
QoS requirements are different for various data types such as streaming video or music, voice and raw data. To provide higher QoS for streaming data, priority levels can be set using tags at the beginning of data frames. Virtual Local Area Network (Vlan) 802.1p priority tags on Ethernet frames are used to specify 8 (0~7) levels of 'user priority'. Homeplug AV powerline allows for 4 levels of Channel Access Priority CAP(0-3)). Therefore, the 8 levels of VLAN Ethernet tags must be mapped to the 4 levels of CAP priority, where CAP 3 is the highest priority and CAP 0 is the lowest. CAP 3 priority might be used for voice and network management frames, CAP 2 is used for streaming video-and must while CAP 1 can CAP 0 are used for data. Mapping VLAN tags to CAP levels is easily done using the VLAM Priority Mapping function on the QoS tab window.

Simple Application Mapping: The group allows you to choose what type of traffic with the highest user priority you will use your local HomePlug device for by pitching on one of the following four radios. Please select the radio type according to your demand.

Advanced VLAN Priority Mapping: The group sets VLAN priority to CAP mapping and default priority. Note that in HomePlug, CAP 3 is the highest priority while CAP 0 is the lowest priority. The values shown in VLAN Tags Priority are the default settings for the first running.

4.4 Diagnostics

The **Diagnostics** homepage shows the **System Information** and **Remote Device History** of all remote devices seen over a period of time which are only readable. Click on the “**Diagnostics**” tab and the following screen display.



The **Diagnostics** information displayed can be saved to a text file. One can email the saved text file to the local supplier when there's technical support require or print the saved text file as reference during a technical support conference.

The **Upper Panel** shows technical data concerning software and hardware present on the host computer which were used to communicate over Powerline Ethernet Adapter on the Powerline network. It may include the following:

- Operating System Platform/Version
- Host Network Name
- User Name
- MAC Address of all NICs (Network interface card) connected to the host
- Identify versions of all Driver DLLs and Libraries used (NDIS) and optionally
- MAC addresses of all devices connected locally to the host

Click the **"Delete"** tab when there's Powerline Ethernet Adapter devices no longer part of the network.

The **Lower Panel** contains a history of all remote Powerline Ethernet Adapter devices seen on the computer over a certain period of time. All devices that were on the powerline network are listed here along with a few other parameters. Powerline Ethernet Adapter devices that are active on the current logical network will show a transfer rate in the Rate column; devices on other networks, or devices that may no longer exist are shown with a "?" in the Rate column. The following remote Powerline Ethernet Adapter devices information is available from the diagnostics screen:

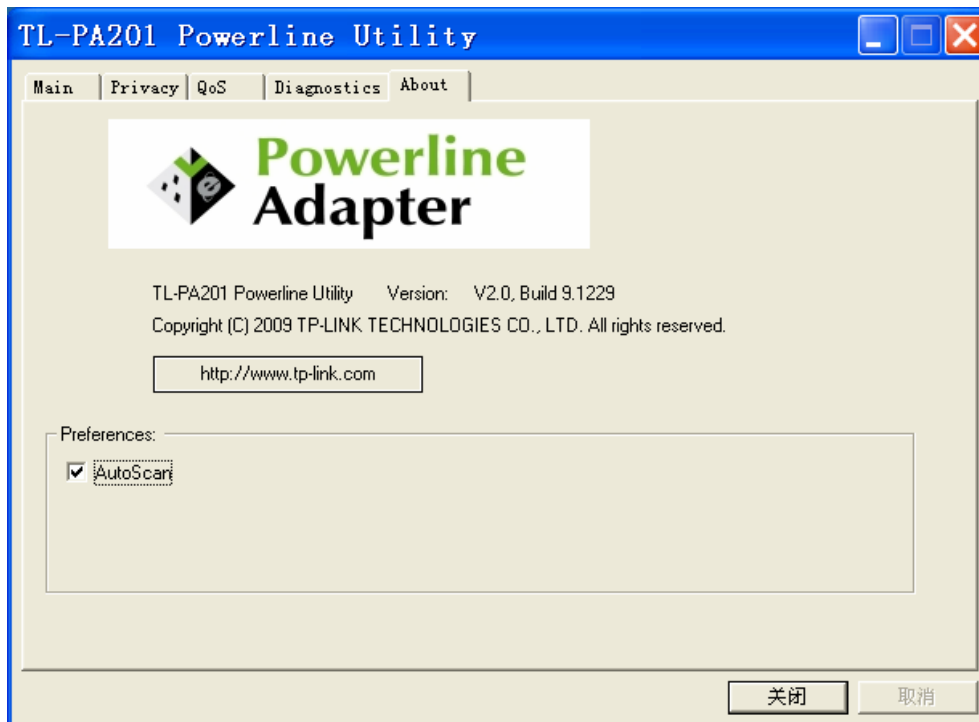
- Device Alias Name
- Device MAC Address
- Device Password
- Device Last known rate

- Device Last Known Network name
- Date device last seen on the network

The diagnostics information displayed may be saved to a text file for later use, or can be printed for reference for a technical support call. Powerline Ethernet Adapter devices, which are not part of the network anymore, can be deleted using the delete button. A dialog window pops up with a confirmation message if we try to delete a device whose password has been entered.

4.5 About

The **About** homepage show the Management Utility software version.



- **AutoScan**: When it is enabled (Place a check), the Management Utility will automatically scan for Powerline Ethernet Adapter devices on the local network every few seconds and updated the scanning information on the **Main** configuration homepage.

Chapter 5 Advance Feature: How to Use the Push buttons

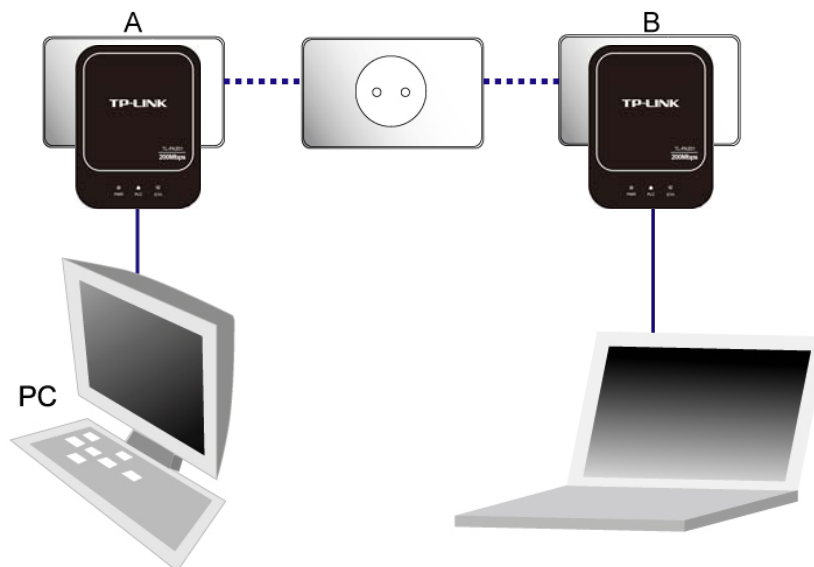
5.1 Pair(Secure with 128 bits-AES)

The Homeplug AV standard uses 128-bit AES (Advanced Encryption Standard) to safely transmit data between powerline adapters. For the powerline adapters to communicate with each other they all need to use the same Network Membership Key (NMK). Otherwise, they cannot unscramble the encrypted data sent in the powerline network.

The **Pair** button allows you to set up a secure powerline connection with other HomePlug AV compliant powerline devices which also support the **Pair** feature.

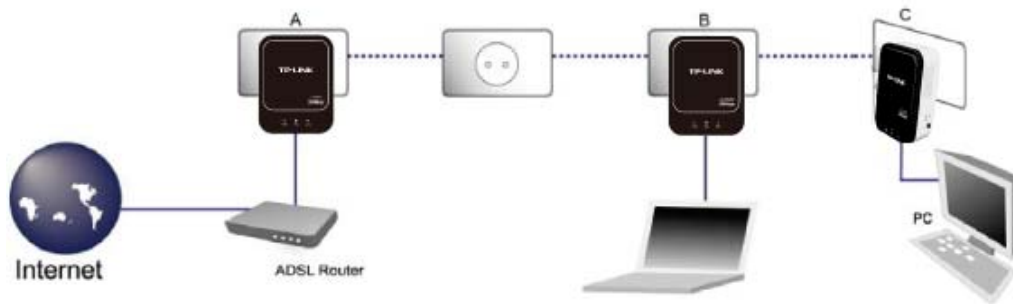
5.2 Set Up a Powerline AV Network with the Pair button

You can connect a number of devices on a powerline network, but you can use the **Pair** button on only two devices at a time.



Create a Powerline network using the Pair button:

- Step 1.** Press and hold the Pair button of Powerline adapter A for 3 to 8 seconds, the Power LED will start flashing.
- Step 2.** Press and hold the Pair button of Powerline adapter B for 3 to 8 seconds, the Power LED will start flashing.
(This must be done within 120 seconds after pressing the Pair button of Powerline adapter A.)
- Step 3.** Wait for about 60 seconds while your Powerline adapter A and B are connecting. The Power LED on both adapters will stop flashing and become solid light when the connection is made.



Join an existing Powerline AV Network:

Powerline adapter A and Powerline adapter B form a HomeplugAV Network, Powerline adapter C wants to join this network.

- Step 1.** Press and hold the Pair button on Powerline adapter C for 3 to 8 seconds.
- Step 2.** Press and hold the Pair button on Powerline adapter A/B for 3 to 8 seconds. (This step must be taken within 120 seconds after step 1 is finished.)
- Step 3.** Wait for about 60 seconds while your Powerline adapters are connecting. The Power LED on Powerline adapter A/B and C will stop flashing and become solid light when the connection is made.

Note:

The sequence of Step 1 and Step 2 can be exchanged.

Leave an existing Powerline AV Network:

As the figure above shown, Powerline adapter A, B and C have formed a HomeplugAV Network. The user wants to remove one device (Powerline adapter A) from this network.

- Step 1.** Press and hold the Pair button on Powerline adapter A for at least 10 seconds. Powerline adapter A will reset and restart. (The PWR LED of Powerline adapter A will momentarily extinguish during resetting, flash during restarting then illuminate steadily.)
- Step 2.** Wait for the reset to complete.

5.3 Reset

To reset the Powerline AV device:

Press and hold the Reset button for 3 to 10 seconds, and then release the button. You will see all LEDs begin to flash. At this moment, the default settings have been restored.

Be careful, don't power off when the device is in reset process.

Chapter 6 Appendix A: Troubleshooting Guide

The Troubleshooting Guide provides answers to common problems regarding the Powerline Ethernet Adapter.

1. The PWR LED does not light up.

Ans. Check the following:

- a) Make sure that the Powerline Ethernet Adapter is properly plugged into a power outlet.
- b) Make sure the power outlet is active (working) by plugging another electric device into it.
- c) Re-plug the Powerline Ethernet Adapter to the power outlet again. If the **PWR** LED still failed to light up, contact your local dealer for technical support.

2. The ETH LED does not light up.

Ans. Check the following:

1. Make sure that the Ethernet cable (RJ-45) is properly connected to the Powerline Ethernet Adapter's Ethernet port.
2. Make sure that the other end of the Ethernet cable (RJ-45) is properly connected to the computer LAN card or to your Cable/xDSL Ethernet port.
3. Make sure your computer LAN card is properly installed and configured.
4. Make sure your Cable/xDSL broadband access is working and configured correctly.
5. Contact your local dealer for technical support if the ETH LED still failed to light up after the above procedures.

3. PLC LED does not light up.

Ans. Check the following:

1. Double click to enable the Management Utility and click the "**Scan**" tab under the **Main** configuration homepage. The Management Utility will automatically detect all other Powerline Ethernet Adapter on your power line network.
2. Try to plug a second Powerline Ethernet Adapter into a near by power outlet and check whether the PLC LED lights up or not.
3. Contact your local dealer for technical support if the PLC LED still failed to light up after the above procedures.